



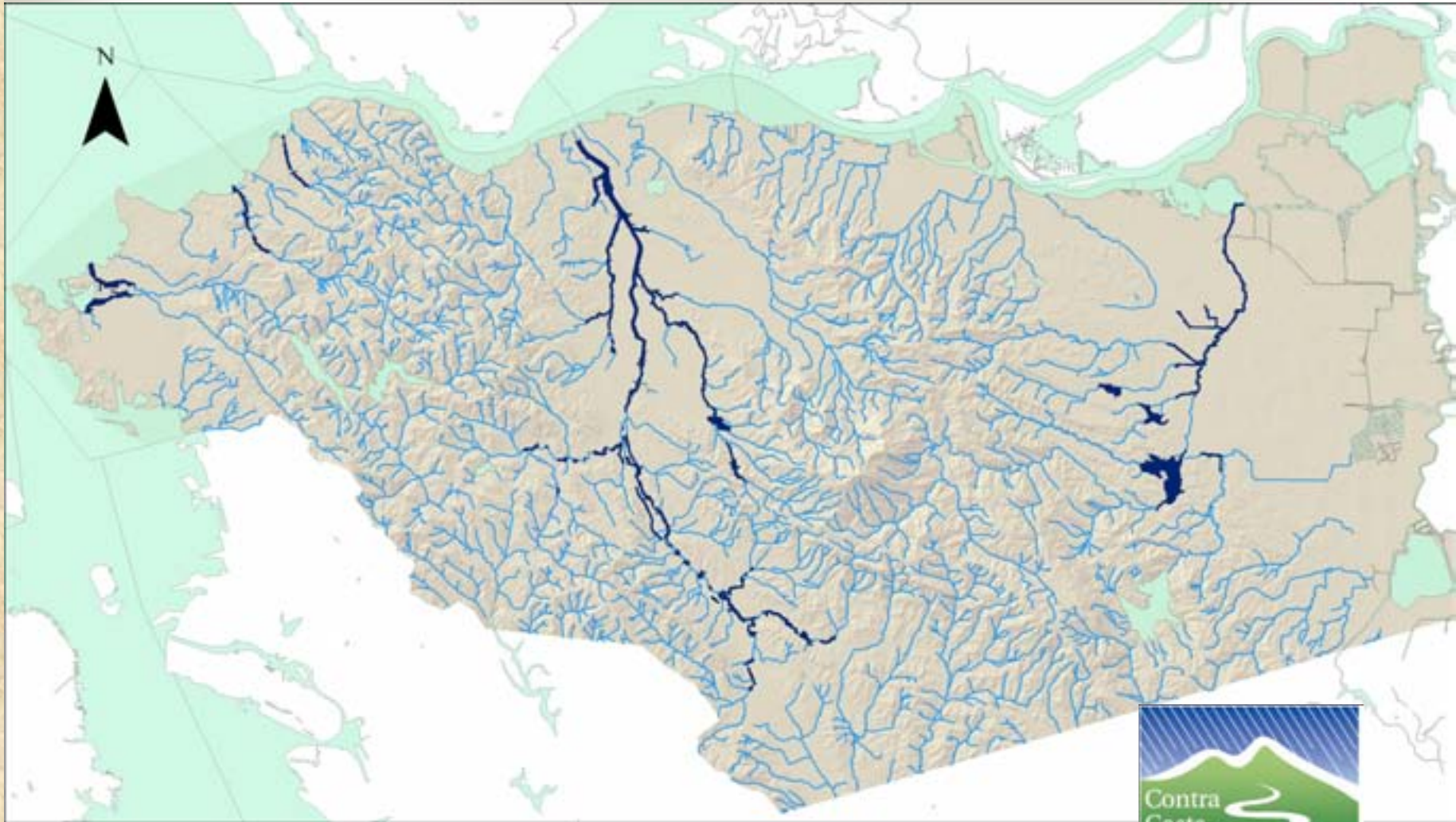
Contra Costa County
Flood Control

& Water Conservation District

Who is the Flood Control District?

- Special District of the State
- Formed in 1951
- Staffed by County Public Works
- 25 Employees
- We are the owner and operator of large portions of many major creek systems, such as Walnut, Pine, Grayson, Sycamore, *Rodeo*, Pinole, Wildcat, San Pablo, and Marsh Creek
- Countywide, including cities.





Who is the Flood Control District?

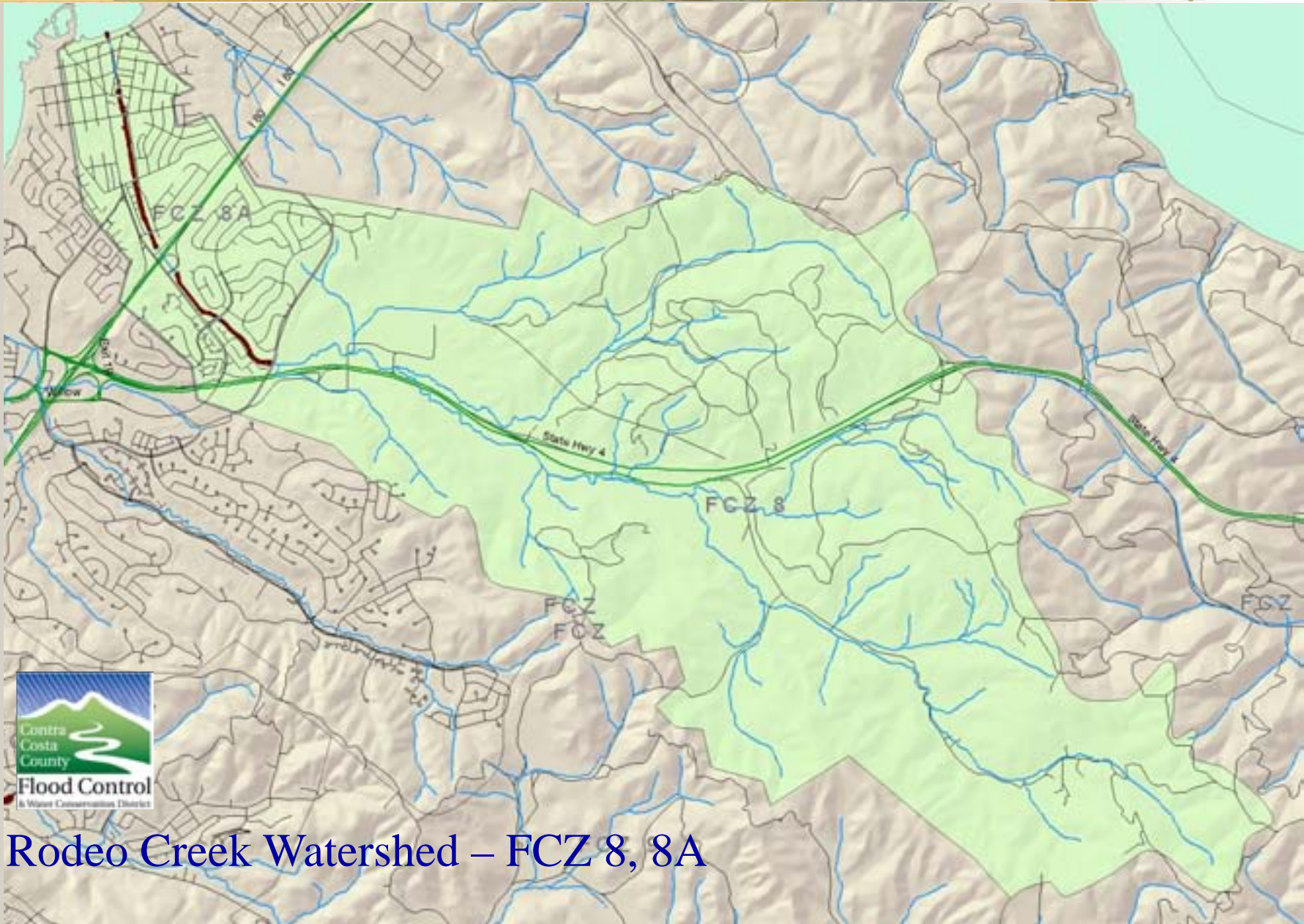
- We provide flood protection, technical assistance, information and education while protecting environmental resources and reducing pollutants for all residents in Contra Costa County.
- Many projects are in partnership with Federal and State agencies, cities, non-profit groups and the development community.



Who is the Flood Control District?

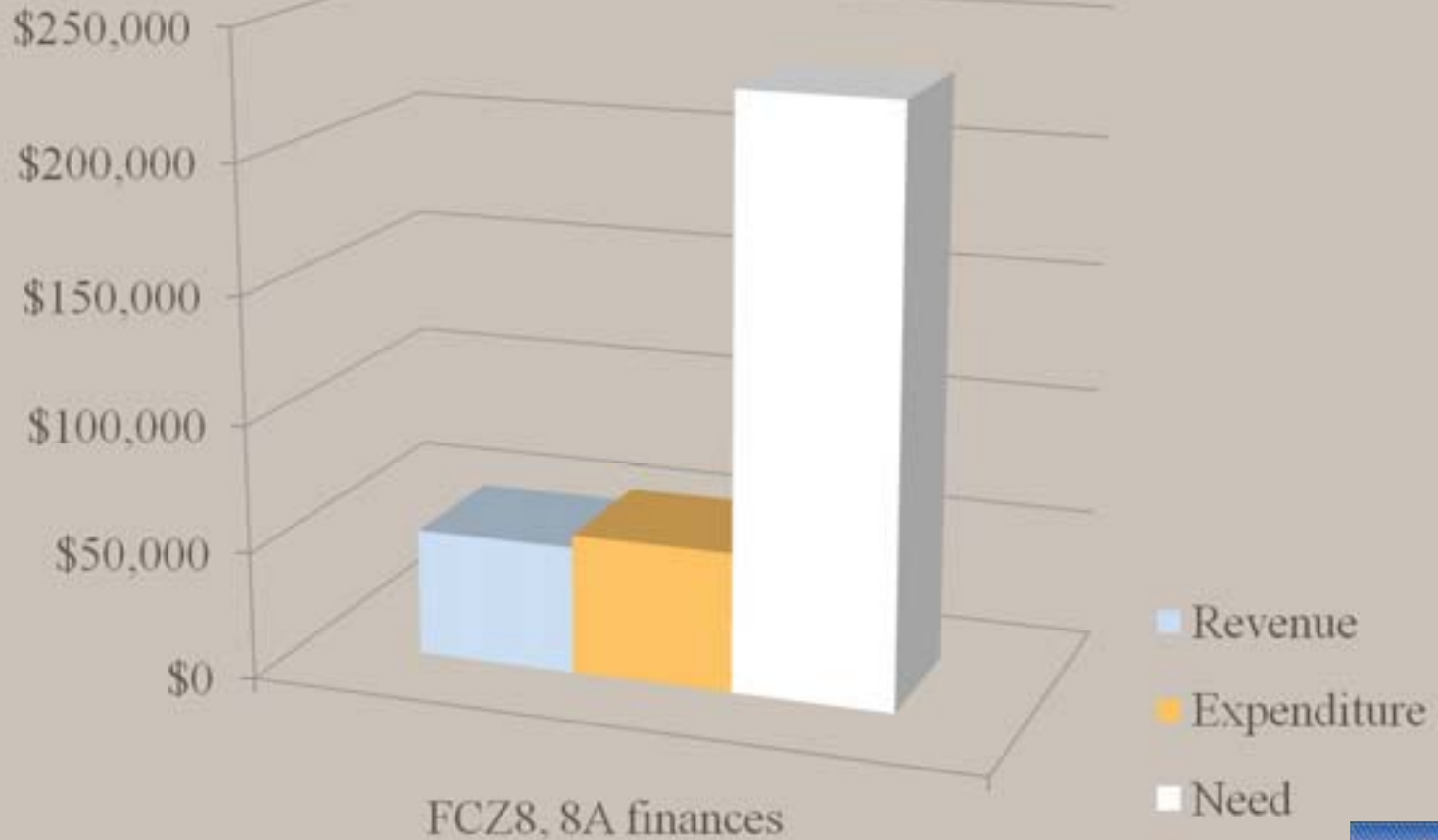
- Funded through a combination of developer fees and ad-valorem property taxes.
- Rodeo Creek is served by Flood Control Zones 8 & 8A.



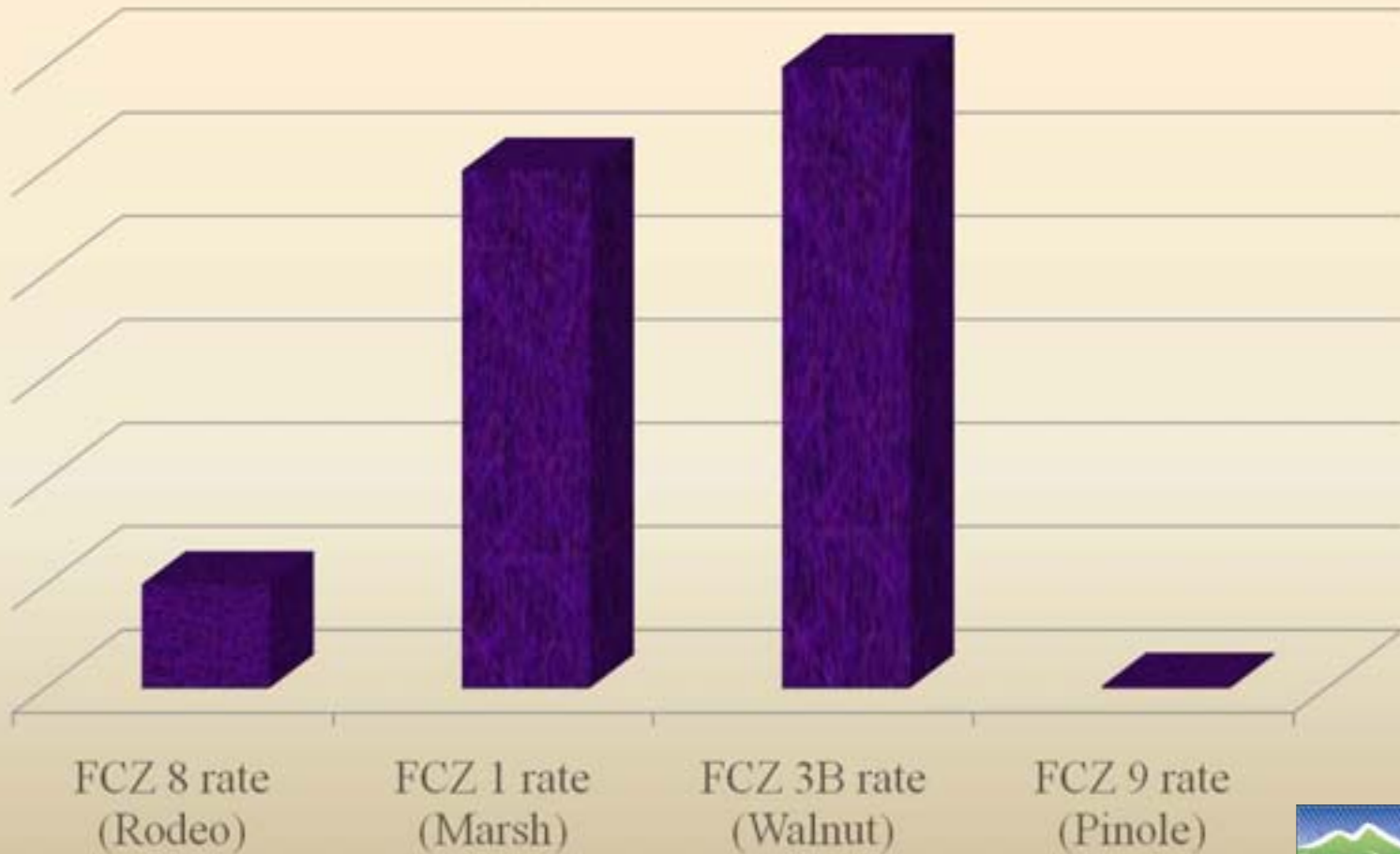


Rodeo Creek Watershed – FCZ 8, 8A

Rodeo Creek, Zones 8 and 8A



Rate Comparison to other FC Zones



Partnerships:

- With Corps of Engineers for channel construction
- With Contra Costa County for trail





2004

Image © 2004 TerraMetrics

© 2008 Tele Atlas

© 2007 Google



Santa Clara County
Flood Control
A Division of Public Works

Elev 15 ft

Streaming 100%

Foot 1089 ft



FC 197

Questions?

1936

