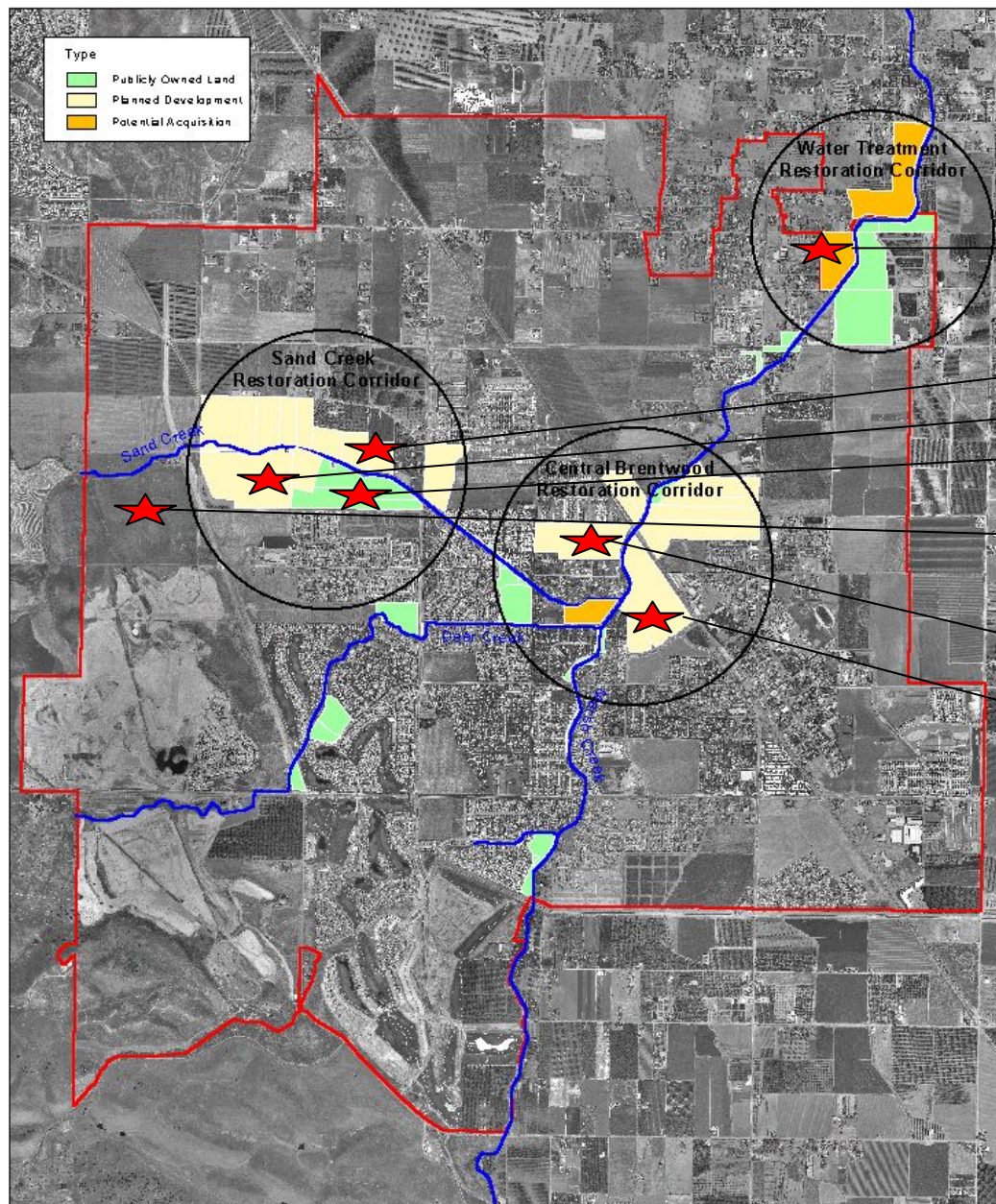


Figure 2.4. Stream Restoration Corridors on Brentwood Creeks



Upcoming Development in the City of Brentwood Along Marsh and Sand Creeks

- Hanson parcel (scheduled to be annexed into City)
- Parkside Villas, Baca Properties
- Androni Property
- Sand Creek Park and Detention Basin, City of Brentwood and Flood Control
- Bridlegate, Discovery Builders
- Carmel Estates, Pulte Homes
- Marseilles, Pinn Brothers Fine Homes

- Approximately 51% of Marsh and Sand Creek through Brentwood has been developed.
- Of the remaining 48% that is undeveloped, approximately 22% is scheduled to be developed within the next 5 years.

Major Creeks Brentwood City Limit

0 1 Miles

Undeveloped Land and Land Scheduled to be Developed in the City of Oakley Along Marsh Creek

[Primary owner, land use, buffer width, length, area]

Ironhouse Sanitary District

Boparai, open space, 60ft , 100 ft , 0.2 acre

Chavoya, planned commercial, 15ft , 150 ft , 0.08 acre

Nunn, residential, 35ft , 170 ft , 0.13 acre

Page, residential, 50ft , 150 ft , 0.17 acre

A-Secure, planned commerc, 100ft , 330 ft , 0.75 acre

CCCFCO, det basin, 50ft , 430 ft , 0.4 acre

Oakley, open space, 180ft , 880 ft , 3.2 acres

City of Oakley is scheduled to develop a park

Brock, open space, 150ft , 725 ft , 2.7 acres

Bacchini, planned dev, 150ft , 900 ft , 3 acres

Frost, residential, 150ft , 480 ft , 1.6 acres

Warren, residential, 150ft , 500 ft , 1.7 acres

Dickinson, residential, 100ft , 460 ft , 1.2 acres

Critchfield, residential, 90ft , 560 ft , 1.2 acres

Zahn, residential, 60ft , 160 ft , 0.25 acre

Granzow, residential, 60ft , 230 ft , 0.3 acre

Rothenberger, residential, 50ft , 180 ft , 0.18 acre

Contra Costa, storage, 60-90ft , 520 ft , 1 acre

